

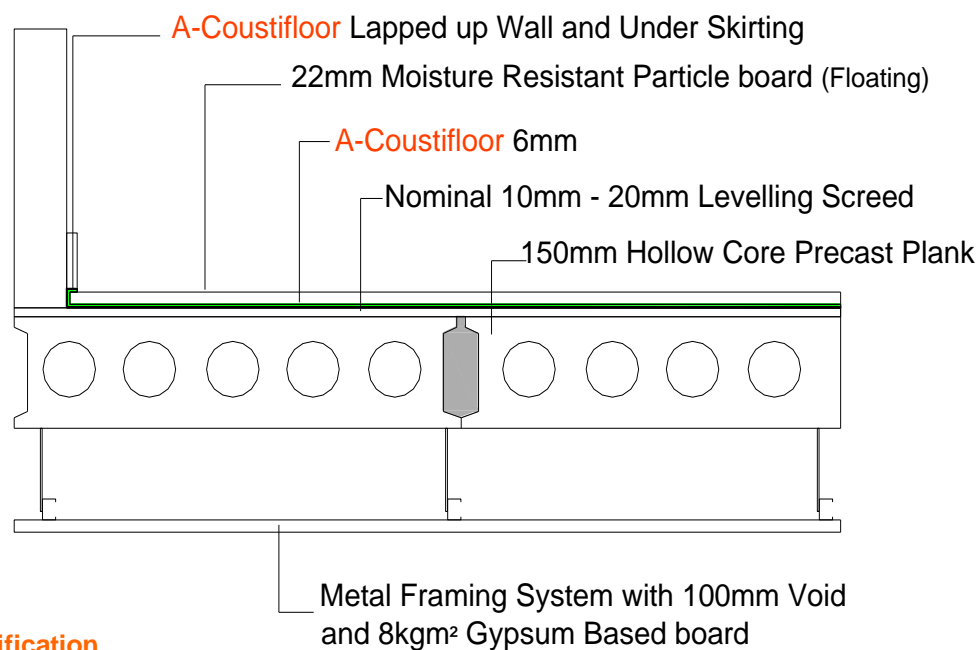
Technical Installation Guide Number 8

A-Cousti FFT4

Description

A-Cousti FFT4 meets the requirements for floating floor treatment 4 for Robust Details E-FC-1, E-FC-2 and E-FS-1 separating floors. The product is a laminate of 1.2 mm A-Cousti acoustic membrane and 5 mm foamed polyolefin membrane (A-Coustifloor) laid with a 22mm P5 moisture resistant tongued and grooved particle board giving a combined mass per unit area > 16kg/m².

To meet the requirement of FFT4 no services to be installed in floor system.



Specification

| | |
|--------------------------------|---|
| Components: | 22 mm P5 moisture resistant T&G Particle board. 5 mm green closed-cell foamed membrane. 1.2 mm A-Cousti membrane. |
| Thickness: | 28 mm |
| Board Size: | 22 mm x 2400mm X 600mm |
| Board weight/m ² : | 15.36 Kg |
| Resilient Layer/m ² | 1.825 Kg |
| Test results (rdΔLw) | 19 dB (Concrete floors minimum rdΔLw 17dB min required to comply). |

Test Results

| | |
|----------------------|--|
| Test results (rdΔLw) | 19 dB (Concrete floors minimum rdΔLw 17dB min required to comply). |
|----------------------|--|

(Compliance to FFT4 was measured at SRL Laboratories over a core floor conforming to the requirements of Robust Details Appendix D. Test Certificate number 3894 / 2005 Ceiling Treatments 1-4 are permitted for Robust Detail. CT 1 is illustrated above)

Product Design

A-Cousti resilient foam has been developed to enhance the range of A-Cousti acoustic products and solutions. It is a closed cell foam that not only provides superb acoustic performance but also has important qualities in resisting water absorption, preventing fungal growth, mildew and bacteria growth and is completely inert. Traditional open cell foams act just like a sponge and absorb up to 33% of their own weight in water, trapping air within the structure and creating a breeding ground for fungi, bacteria and mildew. Once wet the foam will never completely dry out.

Product Features

The closed cell structure and the homogenous, compact process skins of the **A-Cousti** resilient foam combined with the water repellent properties of polyolefins result in a water absorption of less than 1%, when tested in accordance with ISO 2896, and a water vapour transmission co-efficient μ -value of greater than 3500 when tested in accordance with ISO 1663.

Product Benefits

Tests performed in the laboratory showed that the **A-Cousti** resilient foams do **not** contribute to fungal growth. This is explained by the fact that it contains no organic nutrients and therefore does not provide a culture medium for fungi, even under high humidity. The foam is inert and does not rot or decay, even when exposed to high humidity and elevated temperatures. Furthermore, it is produced without the use of plasticizers and other fast migrating additives, which would cause breakdown in adverse conditions. **A-Cousti** foam acts as an all in one resilient acoustic layer and a damp proof membrane. This saves the cost of a supplying and installing a separate DPM.

Applications

As a resilient overlay platform floor system over concrete that conforms to Robust Detail specifications without the requirement for pre completion testing and on refurbished concrete floors to meet the requirements of Approved Document E.

Installation Guide

1. Take **A-Coustifloor** out of polyethylene wrapper
2. Roll out ensuring that the black membrane is face down.
3. Where it butts a wall allow approx 75-100mm overlap at each edge and cut using a sharp knife or scissors.
4. Where it butts push tightly together and tape along edge using suitable carpet tape.
5. Where the floor surface is uneven, or the shape of the room causes "bagging" of the **A-Coustifloor** it can be glued to the substrate using a general purpose contact adhesive in order to give a flat even surface to lay the floating floor, laminate or carpet over. Where the **A-Coustifloor** needs to be cut around irregular shaped rooms, around corners or through openings use tape to ensure that any over sized cut is repaired.
6. At the room corners notch the **A-Coustifloor** by accurately cutting out a square
7. Lay the flooring finish of choice over the **A-Coustifloor** preferably at right angles, or alternatively if joints are running in the same direction stagger the joints. Glue the T&G joints at the joints where present or ensure that the click system is properly located. Whatever the jointing system ensure that it is securely jointed. In order to comply with Approved Document E when used with removable laminate flooring the **A-Coustifloor** must be adhered to the substrate.
8. Mitre the **A-Coustifloor** by turning down each flap in turn and trimming off at a 45 degree angle.
9. Turn the **A-Coustifloor** over the top of the floor board and fit skirting so as to trap the overlap underneath.
10. Where the floor construction does not permit the end detail described above to be used, alternatively leave an 8-10mm gap between the edge of the laminate and the wall and fill with **A-Cousti Fix and Seal** and finish with an appropriate edging strip.
11. Trim the excess with a sharp knife.
12. Finish off by applying **A-Cousti Fix and Seal** to the joint. The **A-Cousti** brand sealer must be used.
13. You have now created a floating floor which is decoupled from the base floor and surrounding walls reducing the transmission of sound through the structure, and by flanking and leakage helping you to meet the requirements of Approved Document E

A-Coustifloor as a sound reduction carpet underlay

- steps 1 and 2 as above
- where it butts a wall allow enough to lap up the **A-Coustifloor** up the wall to the thickness of the carpet i.e. to meet the underside of the skirting
- step 4 as above
- glue to base floor using a general purpose contact adhesive in order to comply with the requirements of Approved Document E (if there is no need to meet the requirements of ADE there is no need to glue)
- Fix carpet grippers, minimising the number of fixing points.
- Lay carpet as per supplier's instructions.

Finishing

- Trim doors to required height
- Refit skirting etc
- Dispose of waste in accordance with local regulations

Updated April 2010